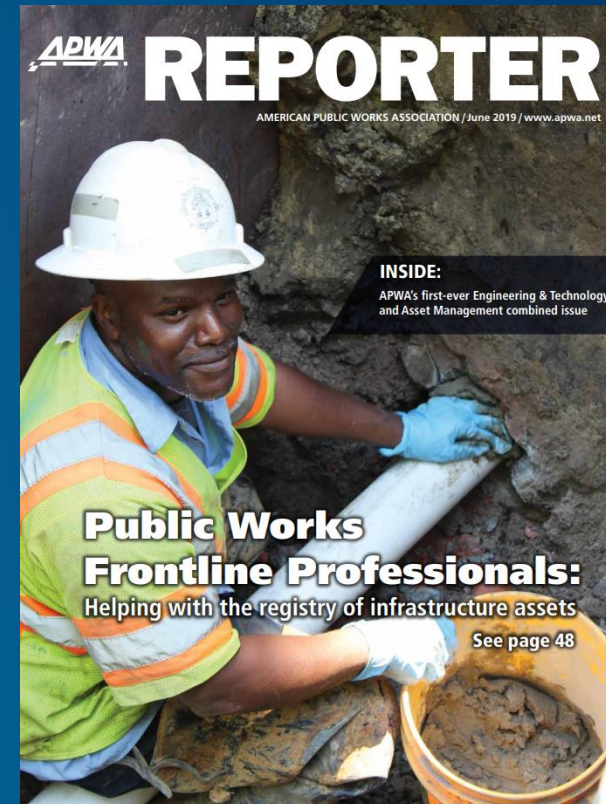


References from APWA Reporter

*“The principles and elements that make up asset management aren’t new. The public works industry has long recognized the importance of sustaining infrastructure over time at the lowest cost while still providing excellent service. **New technologies** can help us reach the next level by providing better information more efficiently.” – Page 3*

*“If it ain’t broke, don’t fix it. But when it comes to a community’s infrastructure, you should consider a plan to preserve it before it’s too late. As the United States’ infrastructure ages and funding measures are often unable to keep up, the search for a **solution** has led many to consider preservation instead of building new. Because of this, many public agencies are shifting their focus—and funding—to preserving their infrastructure.” – Page 66*





ArcGIS for Public Works

Mitchell Winiecki - ESRI

ArcGIS for Public Works

Agenda

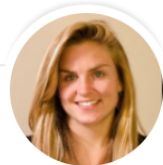
- Introductions
- Patterns, Practices & Industry Trends
 - Products, Solutions, Workflows
- ArcGIS Solutions for Local Government
 - An Overview for Public Works
- Industry Examples & Scenarios
 - - Supporting Mobile Workflow



Introductions

The background features a complex design with a central green-to-yellow gradient. On the left, there are vertical bars of blue and teal, with a circular pattern of dots in shades of blue and green. On the right, there are vertical bars of yellow and light green, with a circular pattern of dots in shades of yellow and green. The overall aesthetic is modern and abstract.


<https://www.community.esri.com>



Ideas Implemented in the December 2018 ArcGIS Online Update

 Blog Post created by [KCullen-esristaff](#)  on Dec 6, 2018

 Like • 0

 Comment • 0

“Undo” Feature Service Edits in ArcGIS Pro

 Idea created by [jrflannery](#) on Aug 31, 2018

 Comment • 3

Reviewed

SCORE
70

0 VOTES DOWN



formed on items that are streamed in from a feature
... (100%) ...

... The Esri Community

Meetups | In Person & Virtual



Largest ESRI Meetups

1 ArcGIS Solutions for Local Government

2,178 Members | [Redlands, CA](#)

 Organized by Heather E.

2 GeoDev Meetup Group - Northeast

1,949 Members | [Washington, DC](#)

 Organized by Amy N.

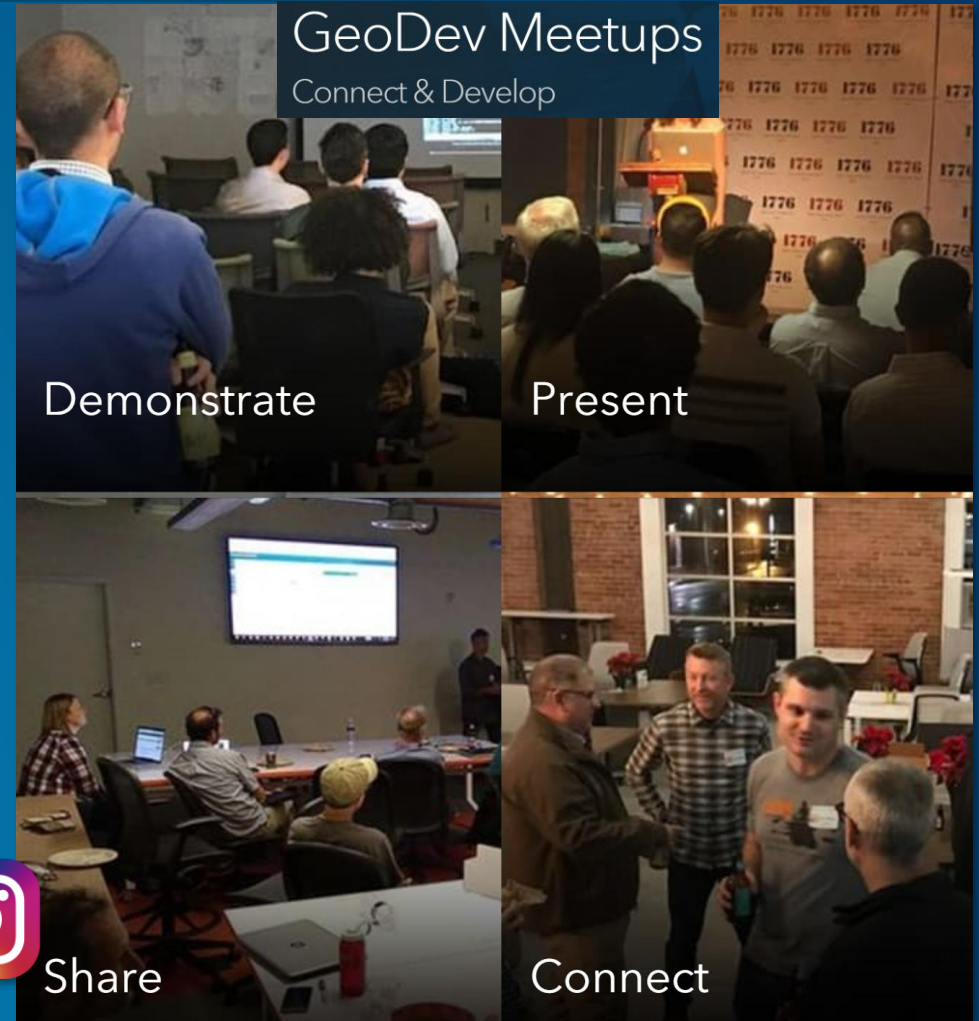


<https://www.meetup.com/topics/esri/>

EsriGeoDev

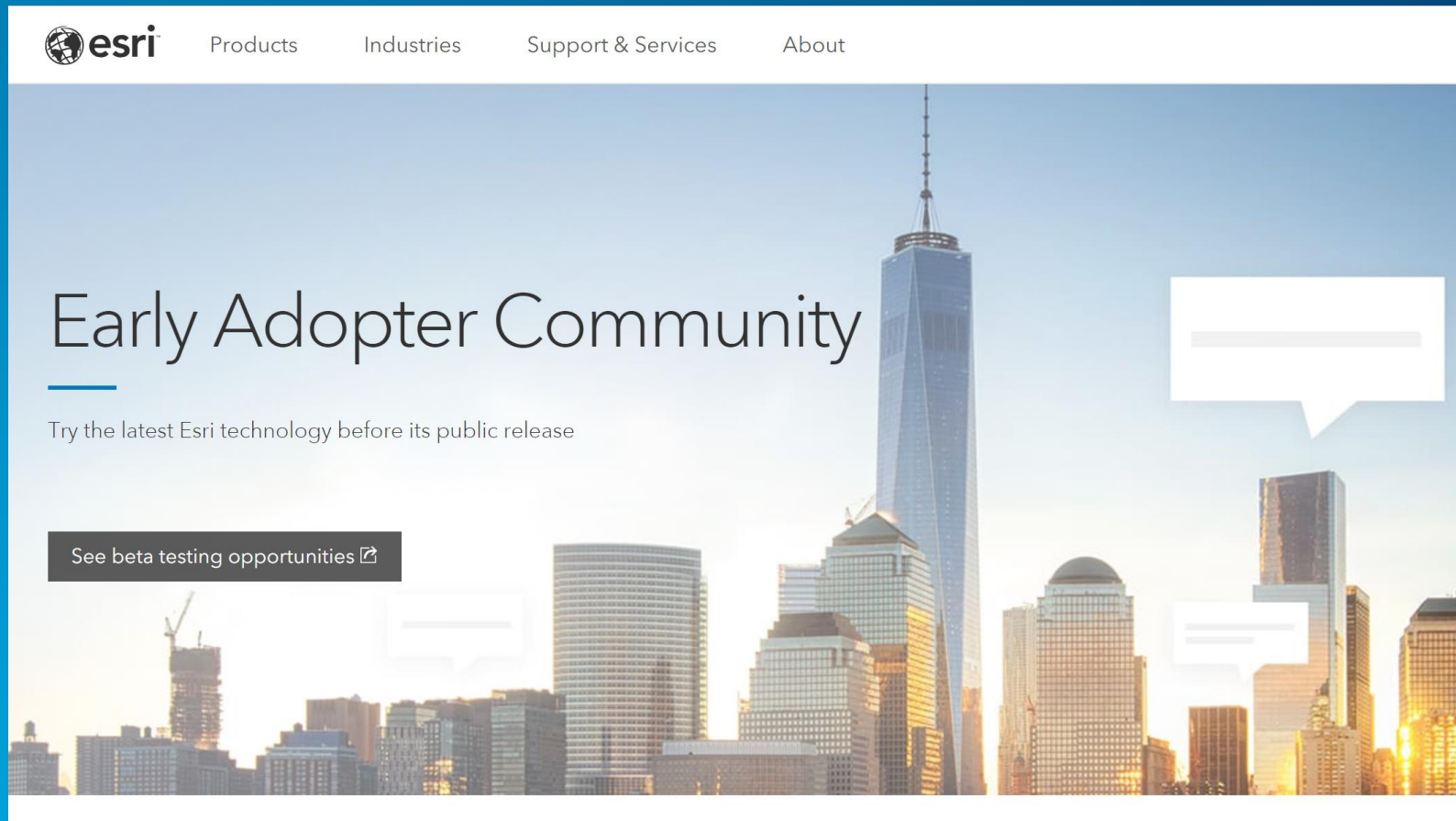


GeoNet
The Esri Community



... Connect with Esri Experts, Partners, Your Peers

Early Adopter Community | Try the Latest Esri Technology Before its Public Release



esri Products Industries Support & Services About

Early Adopter Community

Try the latest Esri technology before its public release

See beta testing opportunities [↗](#)

<https://www.esri.com/en-us/early-adopter>

... Your Authoritative Source for Esri's Alpha & Beta Releases



Patterns, Practices & Trends.

Products – Solutions – Workflows

Common Patterns of Use

Mapping & Visualization



Understand locations and relationships with maps and visual representations

Data Management



Collect, organize, and maintain accurate locations and details about assets and resources

Field Mobility



Manage and enable a mobile workforce to collect and access information in the field

Monitoring



Track, manage, and monitor assets and resources in real-time

Analytics



Discover, quantify, and predict trends and patterns to improve outcomes

Design & Planning



Evaluate alternative solutions and create optimal designs

Decision Support



Gain situational awareness, and enable information-driven decision making

Constituent Engagement



Communicate and collaborate with citizens and external communities of interest

Sharing & Collaboration



Empower everyone to easily discover, use, make, and share geographic information

Industry Challenges?

Specific to Illinois

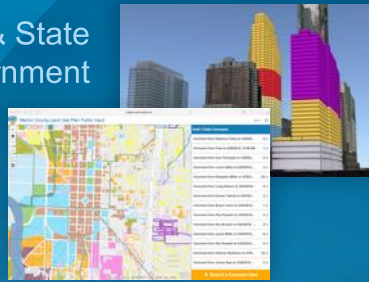
On a daily basis, Public Works are faced with a number of demands and challenges including:

- Containing operational costs
- Responding to unfunded mandates
- Increasing demands for services
- The need to be more transparent
- Managing and maintaining aging assets
- Disaster preparedness and recovery efforts
- Safety concerns
- Attracting and Retaining Talent



Solution Components

Local & State Government



Utilities & Telecom



Emergency Management & Public Safety



Defense & Security



- Popular (500K Downloads)
- Extensive (450+)
- Open Source
- Fully Supported

- Tools
- Data Models
- Apps
- Workflows
- Maps
- Widgets
- Add-Ins
- Dashboards

Solution Configurations



New

Preconfigured

Ready to Deploy

- Technology
- Workflows
- Implementation
- Training
- Support

[Solutions Page](#)
[ArcGIS Gallery](#)

<http://solutions.arcgis.com/>

*Rapidly Delivering Value . . .
. . . Implemented by Users, Partners, & Esri*

Field Solutions | Taking ArcGIS Beyond the Office

New Operations Dashboard

Monitor Field Activity



View of Operations



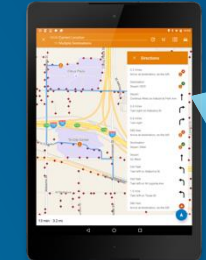
Mobile Map Packages with Vector Tiles



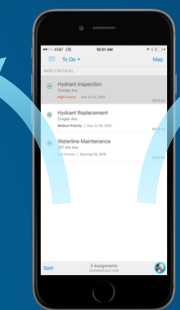
Mobile Map Package (MMPK)

Workforce for ArcGIS Enhanced Integration

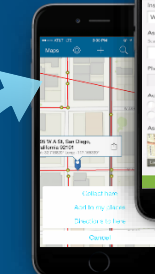
Navigator



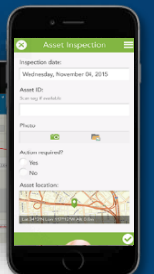
Workforce



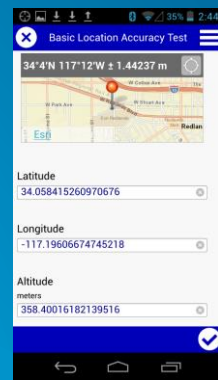
Collector



Survey123



Integration with GNSS Receivers

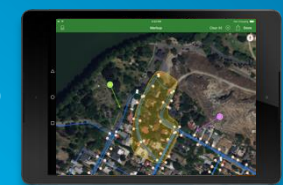


High Accuracy

Map Markup in Explorer for ArcGIS

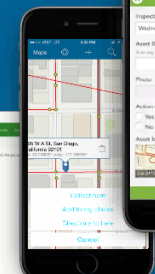
Markup

Explorer

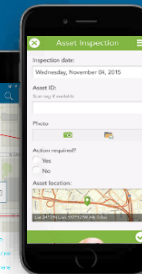


URL Schemes

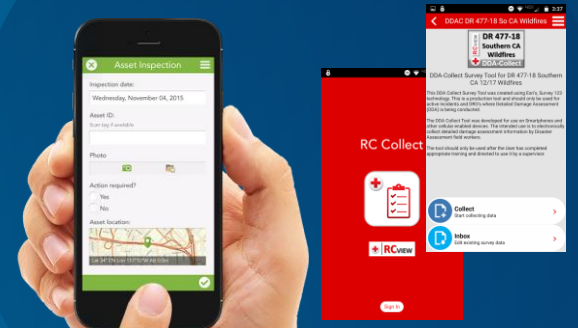
Collector




Survey123



Smarter Forms in Survey 123 for ArcGIS



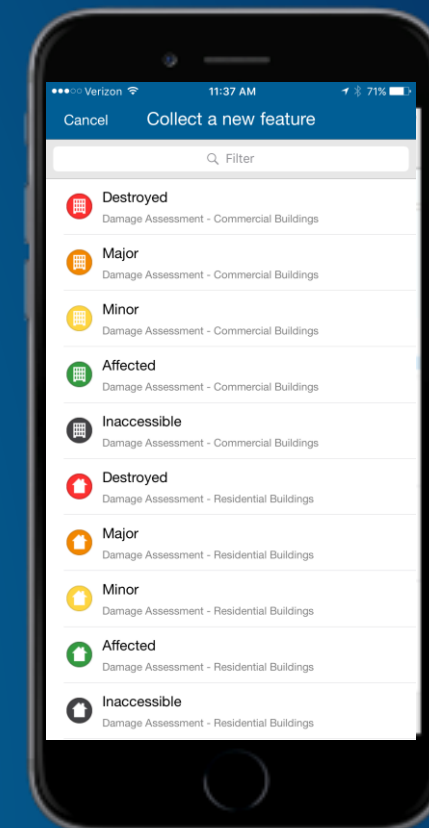
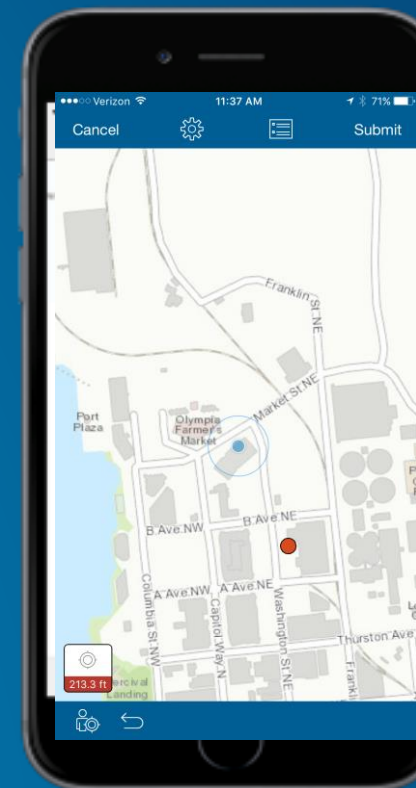
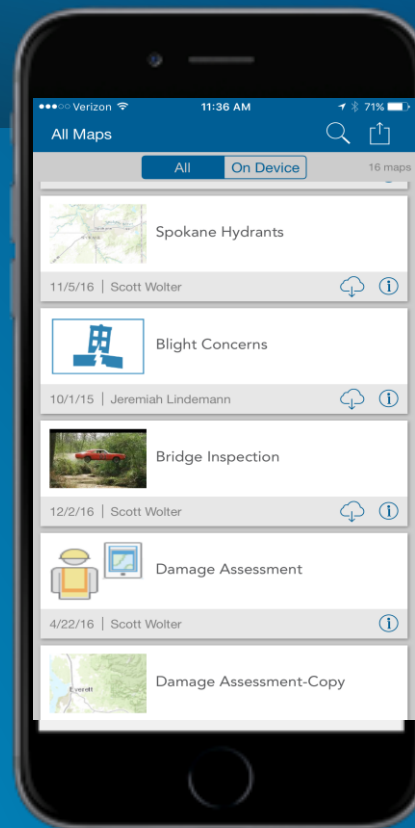
RC Collect





Collector for ArcGIS

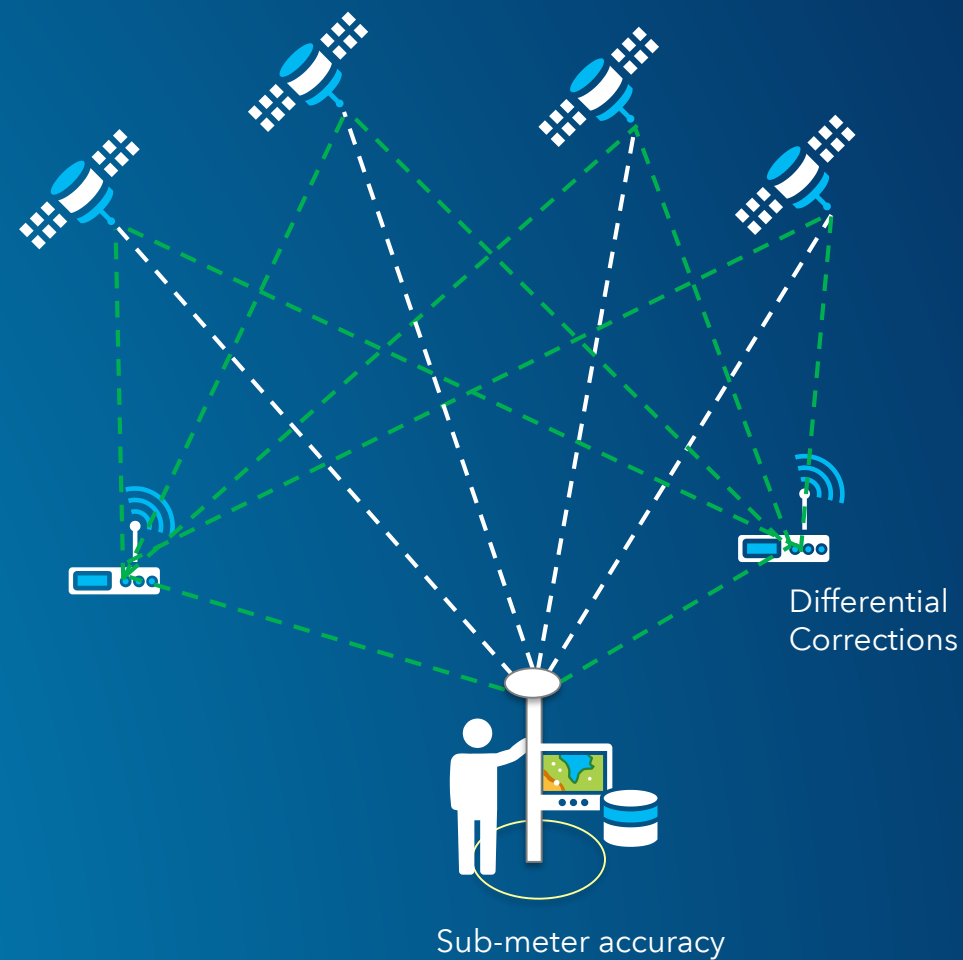
- Create and Share a Map
- Collect Data
- Edit Related Data
- Edit Versioned Data
- Go Offline
- Get Professional Grade Accuracy



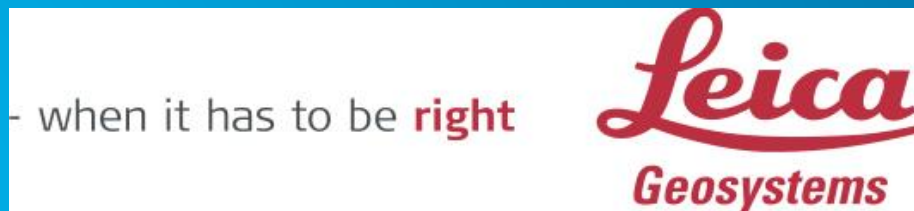


Collector for ArcGIS

- High Accuracy Data Collection Receivers:
 - Set a location provider
 - Define a location profile
 - Attach accuracy information to your data
 - Receive alerts and notifications



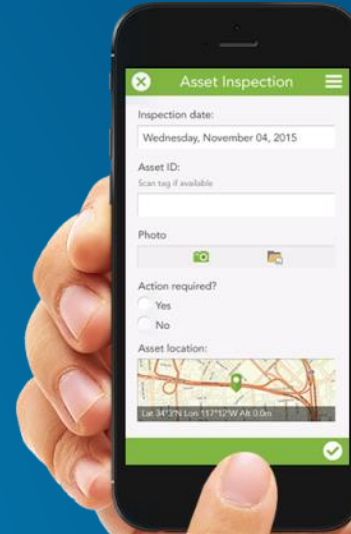
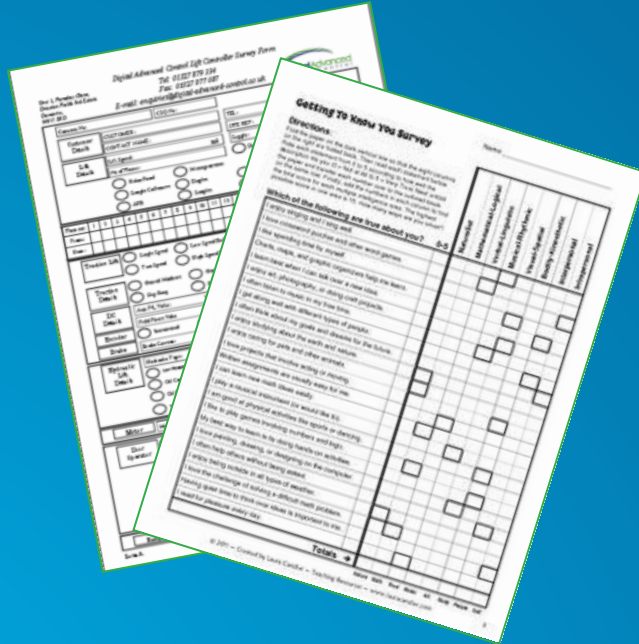
Collector for ArcGIS – Lots of Receivers





Survey123 for ArcGIS

Are you trying to replace paper forms?



Survey123 for ArcGIS works on any device

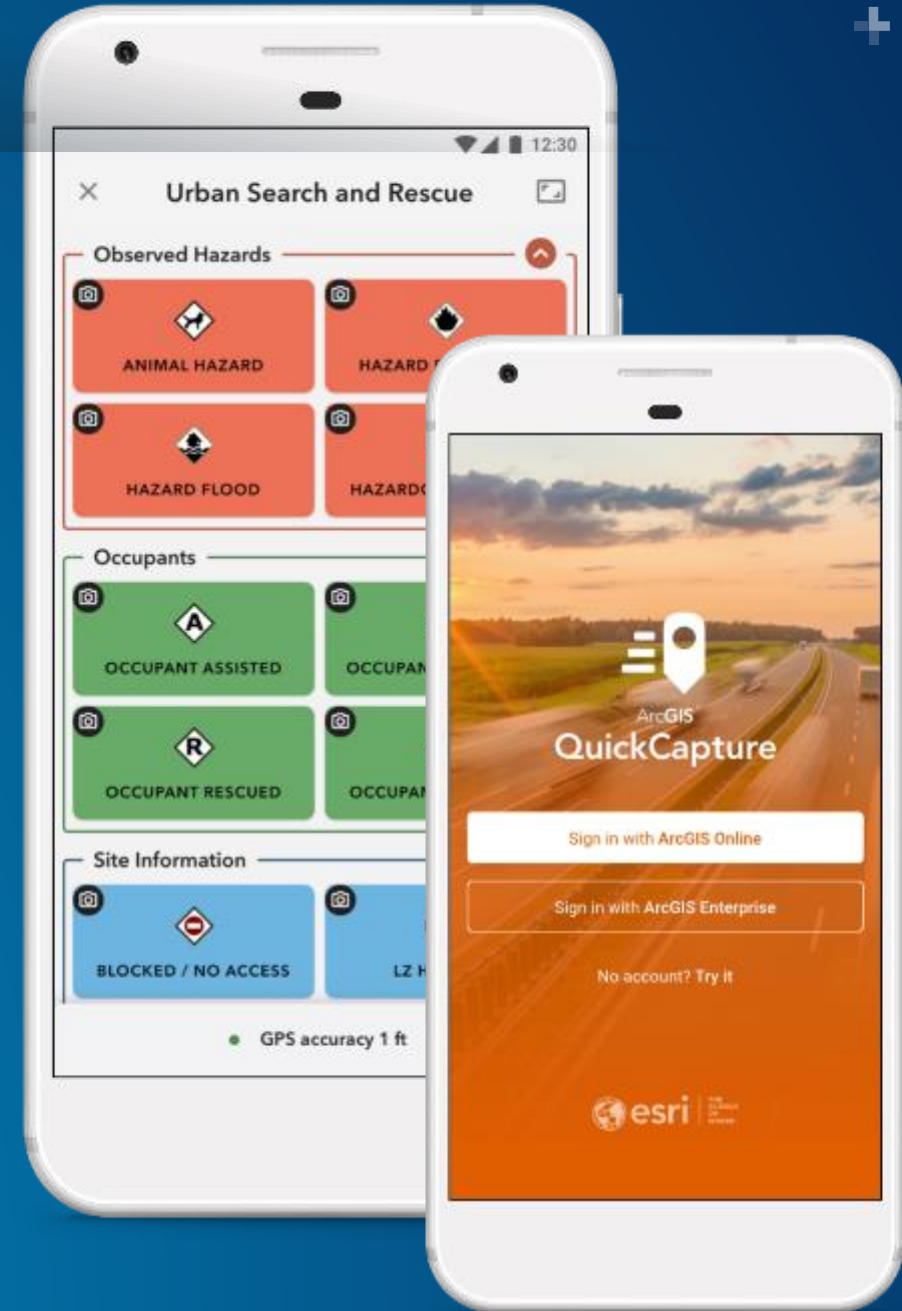


ArcGIS QuickCapture - The rapid data collection app

A “big button” mobile app

Simplest way to capture field observations

At-speed data collection workflows



Operations Dashboard | Dynamic Visual Reporting & Analytics

Totally New App

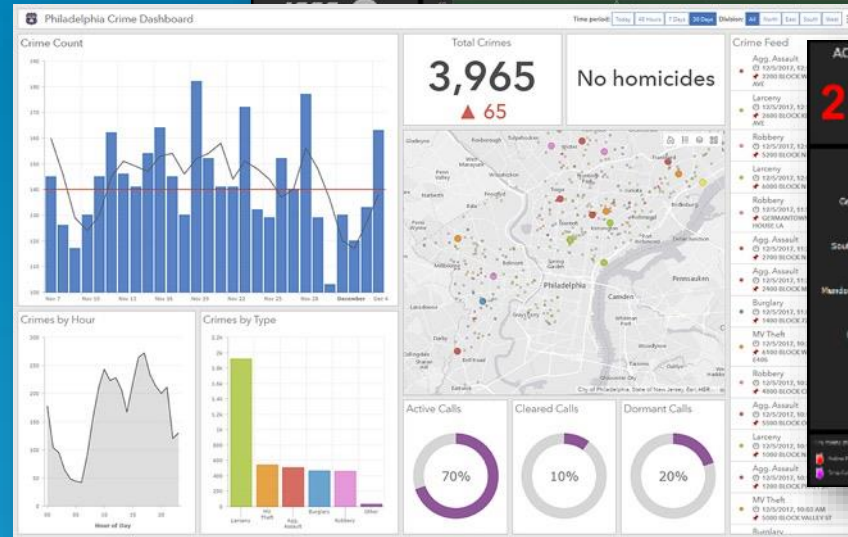
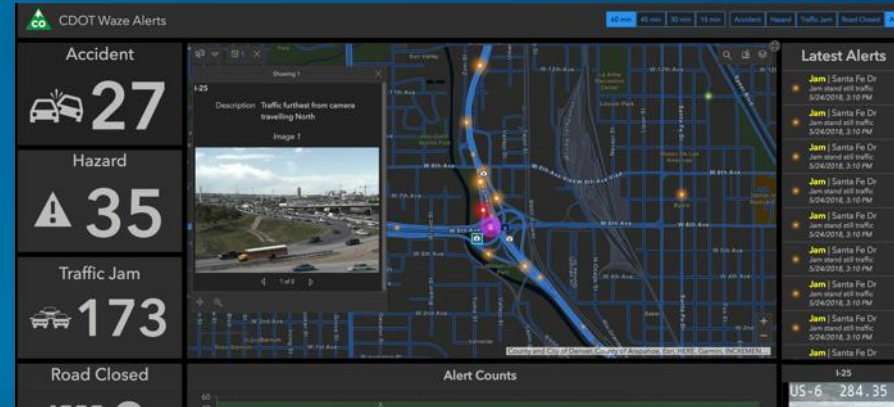
- Web-Based
- Improved Performance
- Easy Configuration
- Easily Embedded
- New Widgets



Online or Enterprise

Any Data Feed

Accidents



Crime



Wildfire



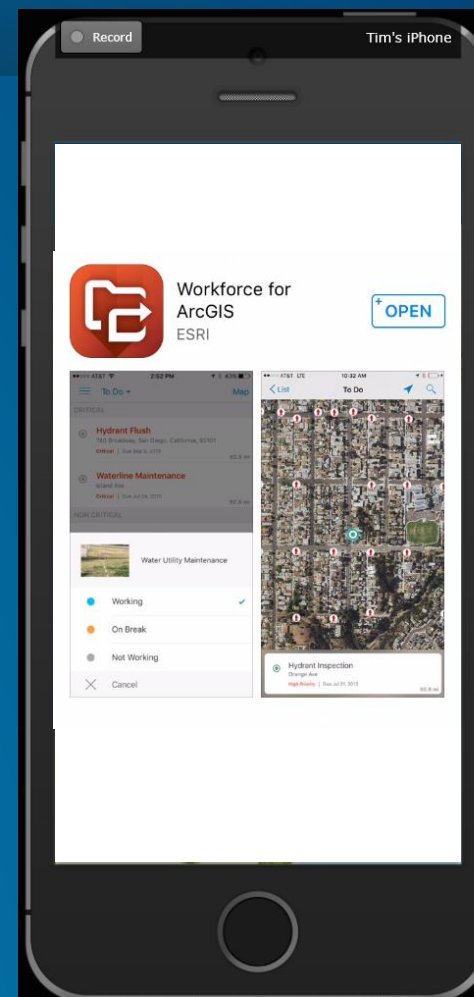
Workforce for ArcGIS

Field Workforce Optimization

Efficiently plan and assign work

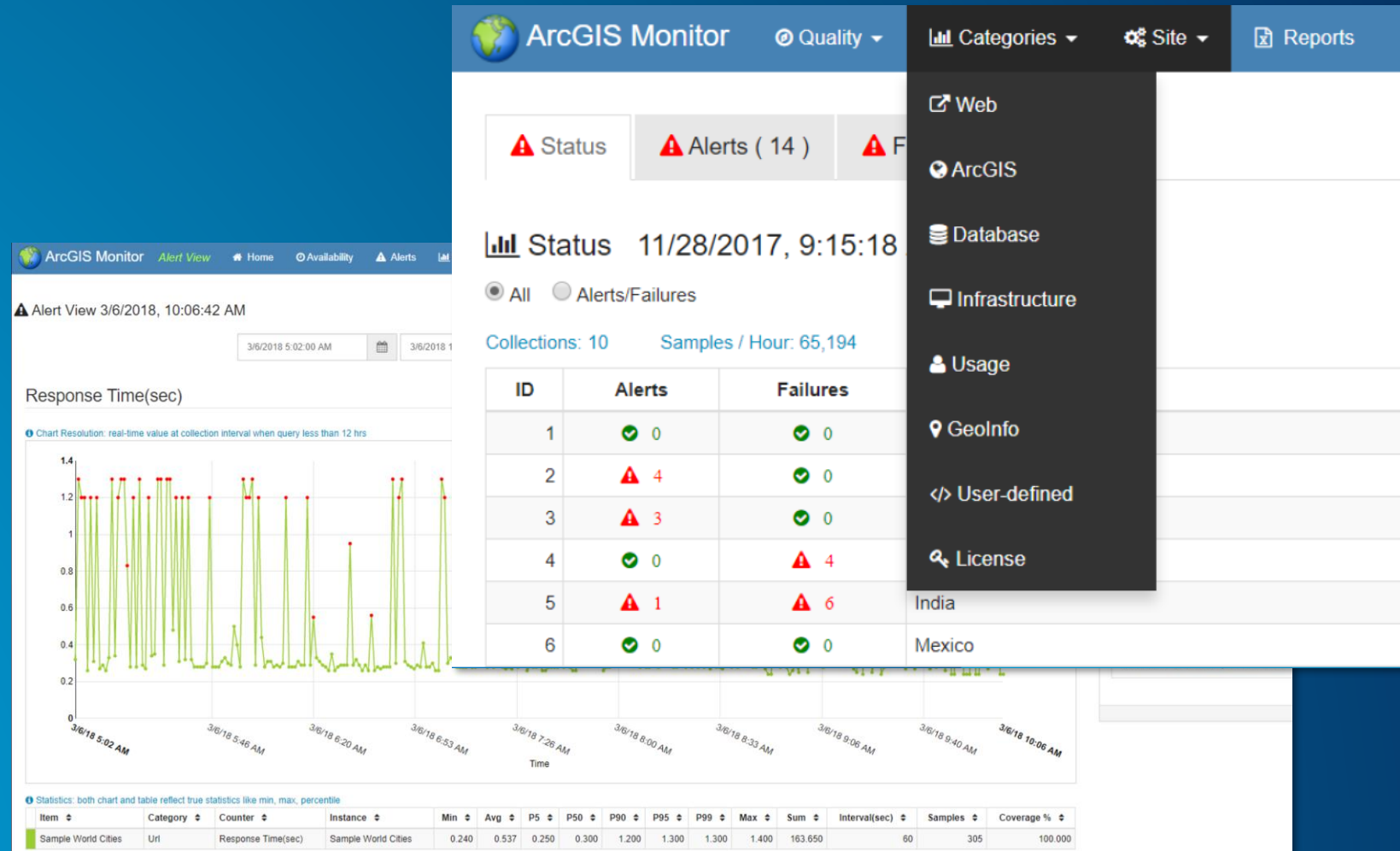
Issue Assignments to Field Workers

Report Status from the Field



ArcGIS Monitor | Optimize Your Enterprise GIS Deployments

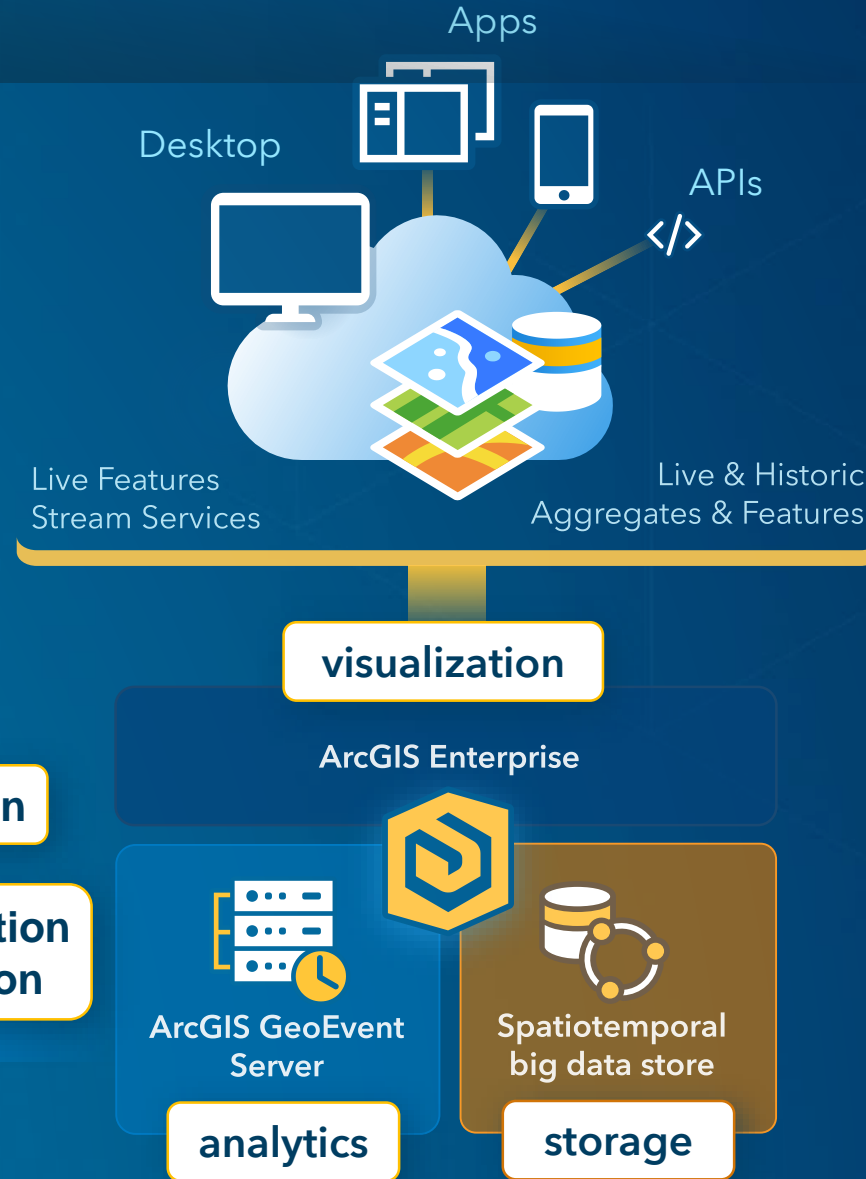
- End-to-End monitoring:
 - ArcGIS platform
 - Underlying infrastructure
- Quickly diagnose:
 - Unstable infrastructure
 - Overloaded system
 - Bottlenecks
- Scalable & non-intrusive



... Used by Esri Managed Cloud Services to Monitor 500+ GIS Servers

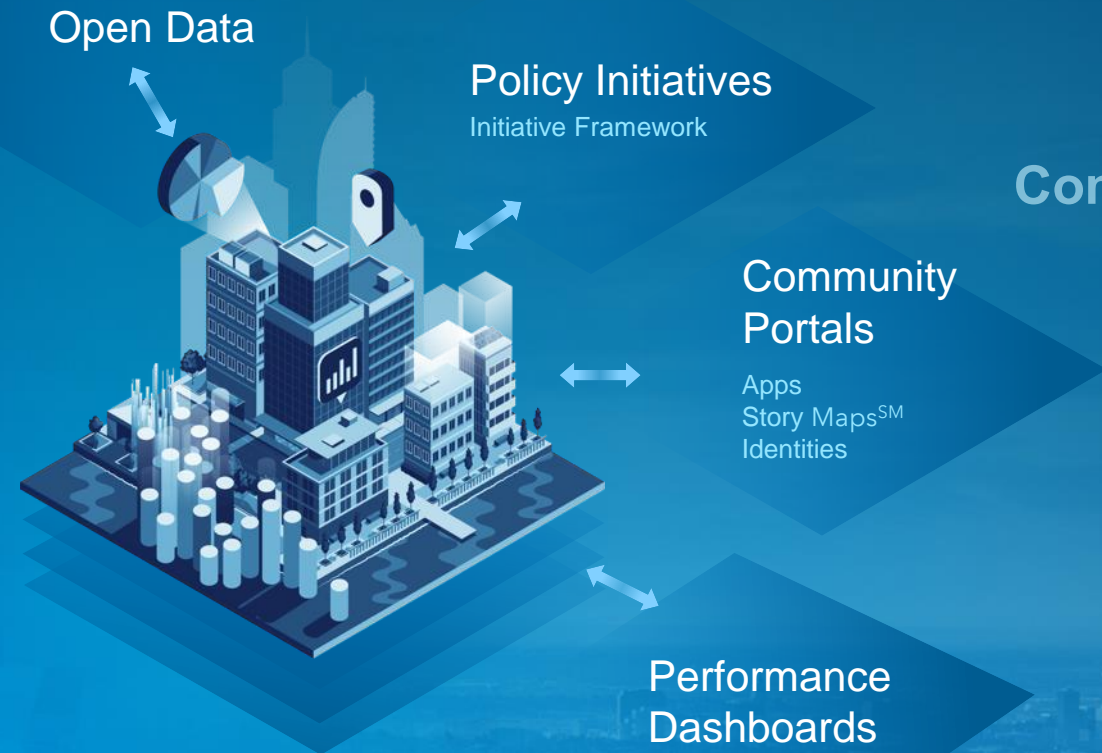
GeoEvent Server: *Real-Time Capabilities*

Analyze Data with Filters, Processors
Event Handlers, Listeners, if/then do this...





Organizing & Leveraging Stakeholder Interactions



Smart Communities

Stakeholders

- Government Leaders
- Community Leaders
- Universities
- NGOs
- Citizens

Initiatives

... Enabling Civic Participation

THE SCIENCE OF WHERE

A Framework and Process

Geographic Knowledge

Measuring

Analyzing

Understanding

Collaborating

Data Management & Integration

Visualization & Mapping

Analysis & Modeling

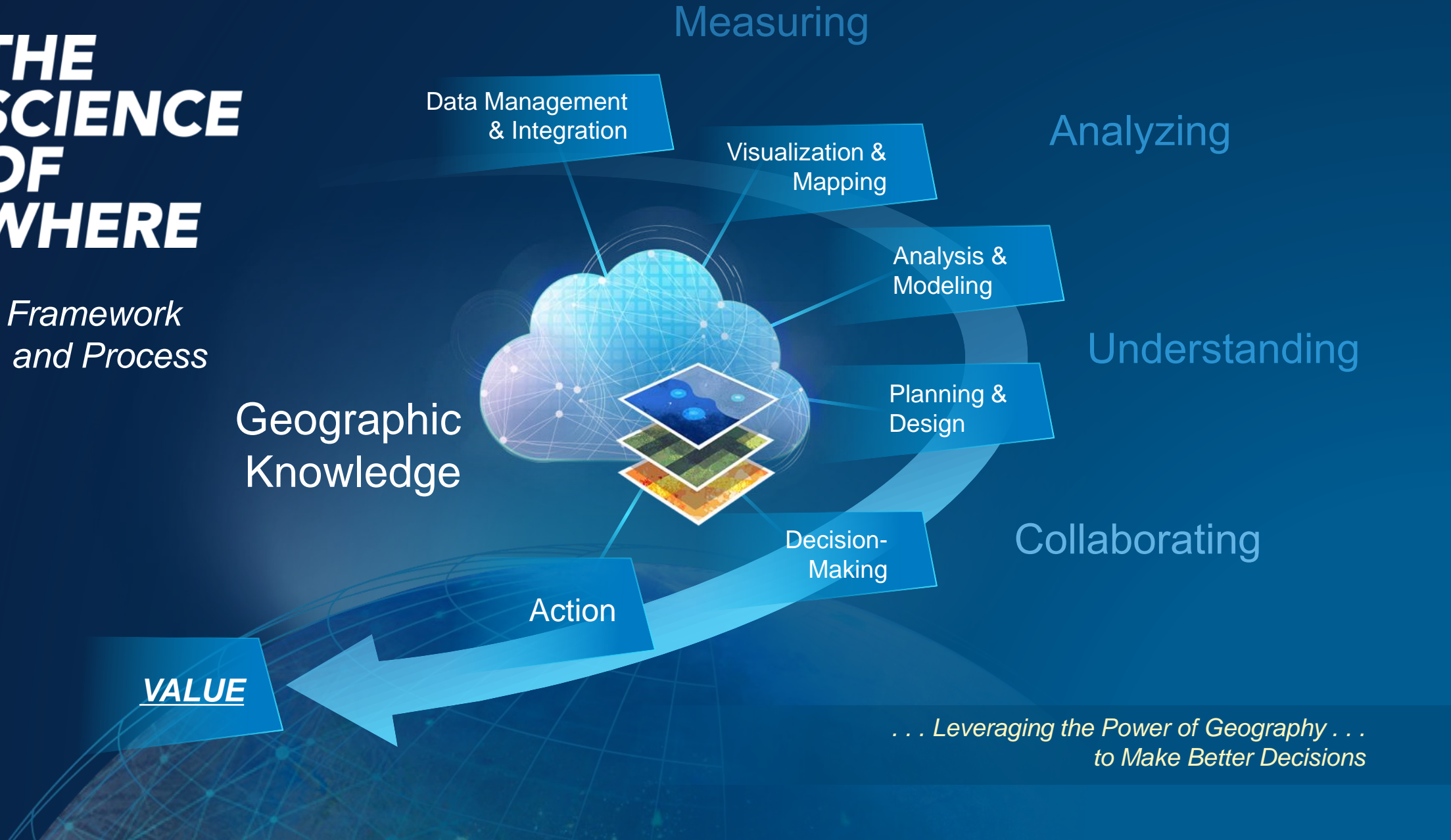
Planning & Design

Decision-Making

Action

VALUE

*... Leveraging the Power of Geography ...
to Make Better Decisions*



THE SCIENCE OF WHERE

A Framework and Process

Geographic Knowledge

Data Management & Integration

Visualization & Mapping

Analysis & Modeling

Planning & Design

Decision-Making

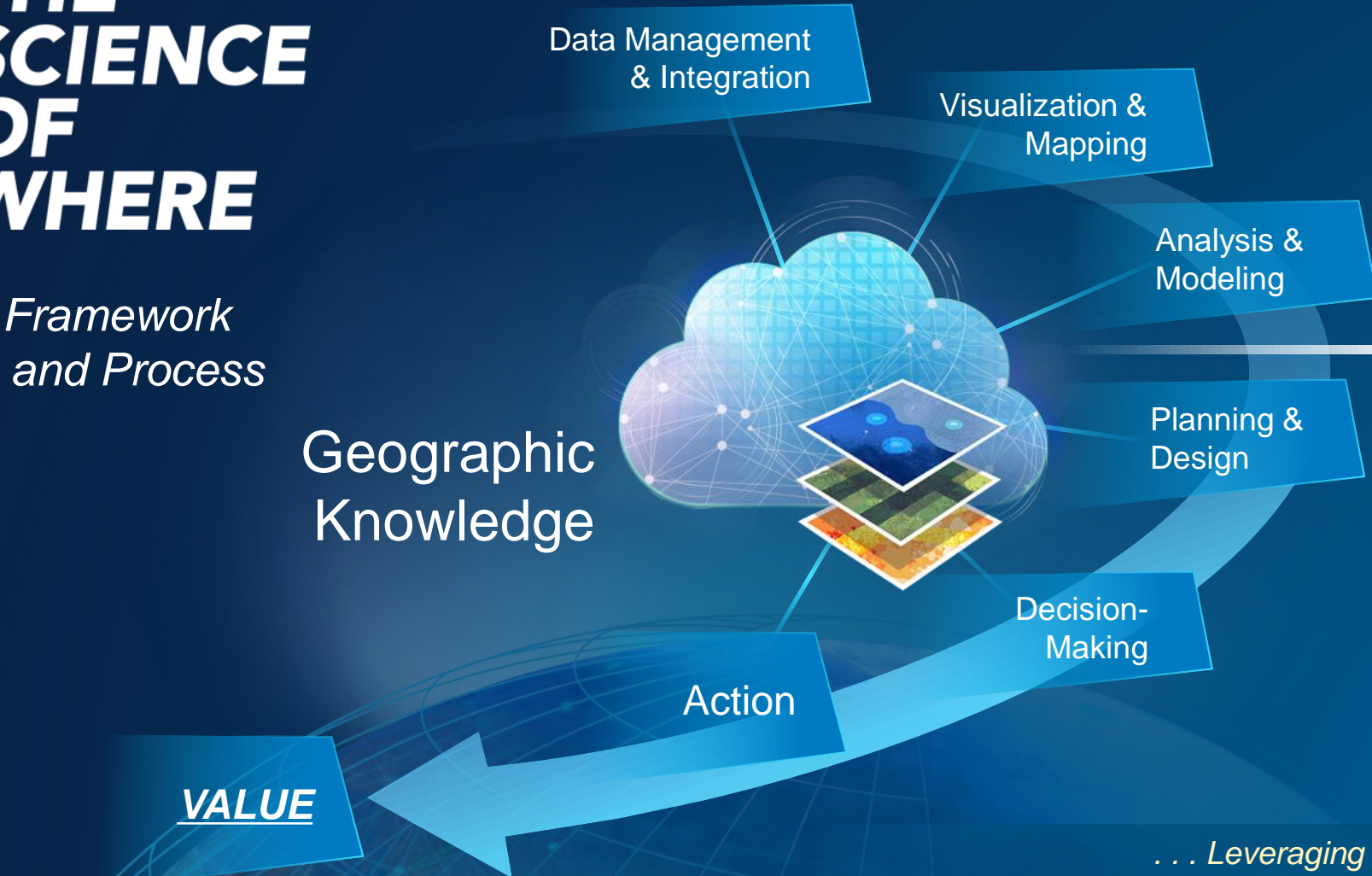
Action

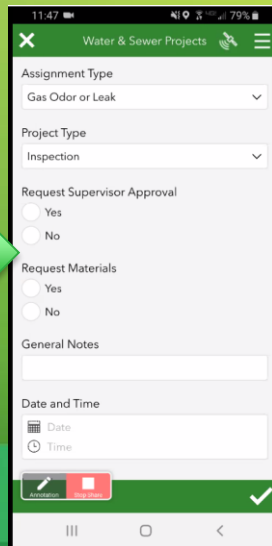
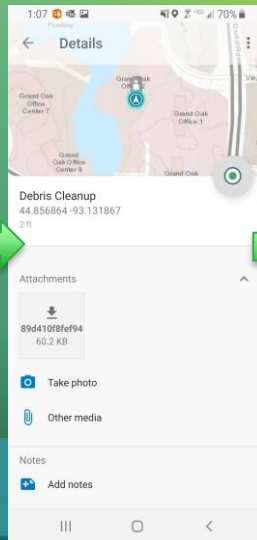
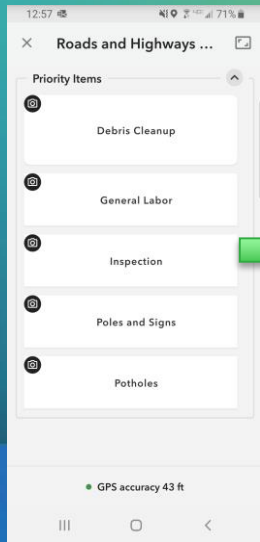
VALUE

GIS

LOCATION INTELLIGENCE

*... Leveraging the Power of Geography ...
to Make Better Decisions*





Science of Where Framework

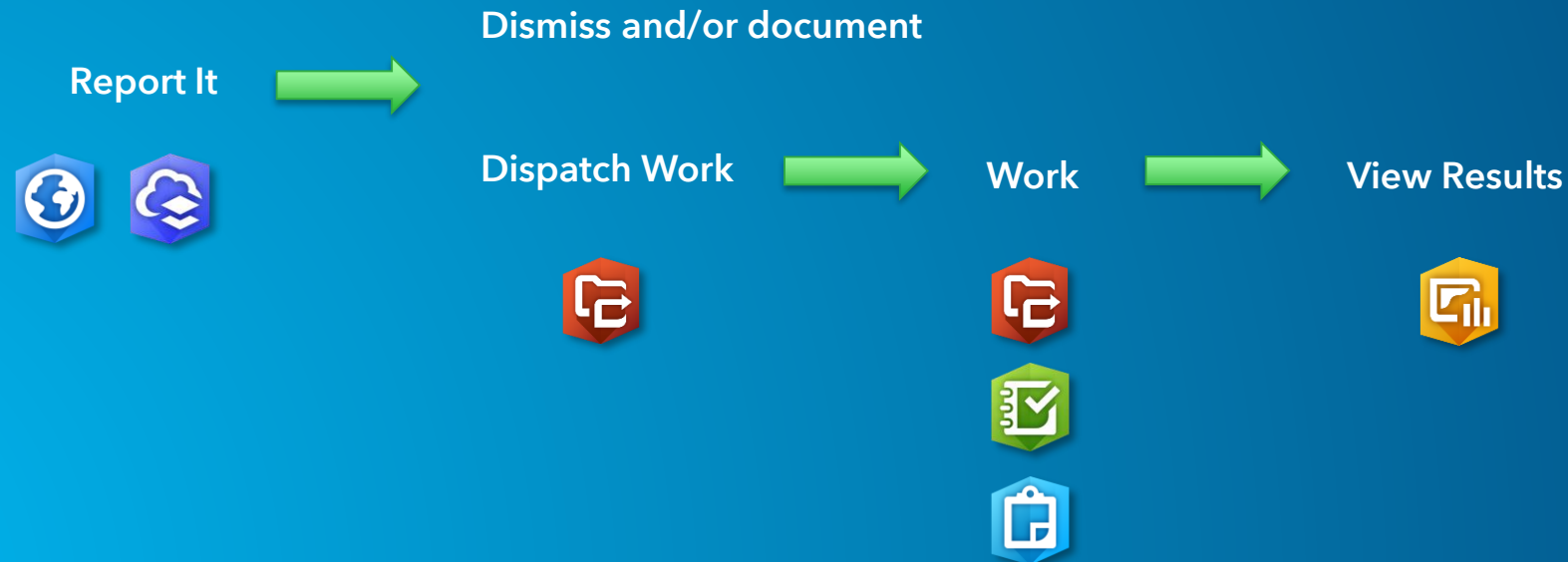
Supporting Mobile Workflows

Supporting Mobile Workflows

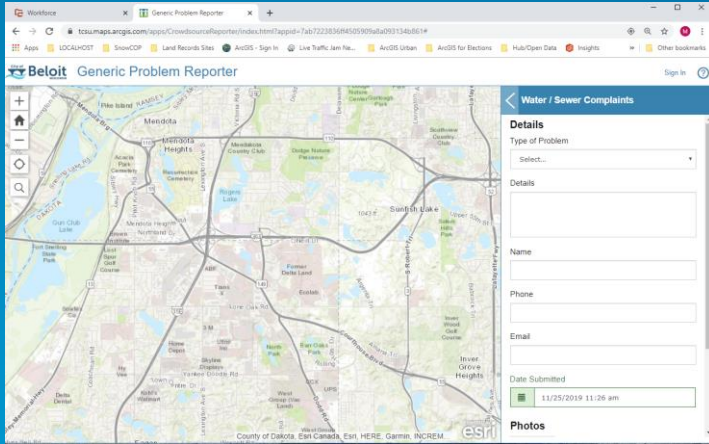
Scenario #1:

I need a solution for internal use to manage simple water and sewer projects. This solution would preferably streamline workflows and replace paper form / double entry.

More specifically, our work follows a general order and we would like a solution to account for every stage. The solution would also act as a system of record for historic data, to assist with Customer Service calls, etc.



Supporting Mobile Workflows Scenario #1 Continued



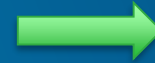
Report It



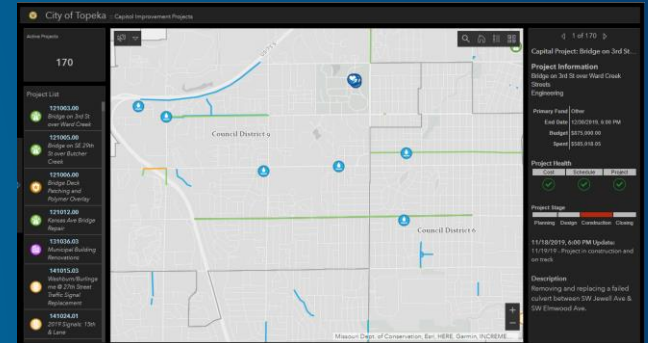
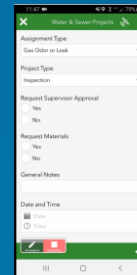
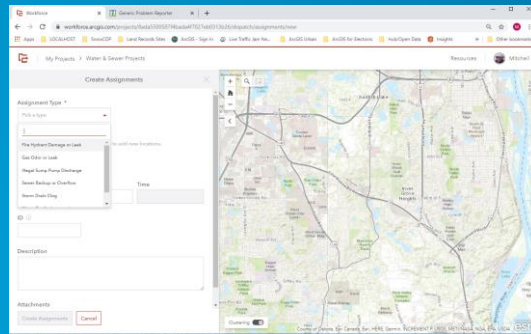
Dispatch Work



Field Worker



View Results



Let's do it!

Recap:

- We repurposed an existing, out of the box solution and configured it for internal use for Water and Sewer Projects.
- Viewed incoming issues using Workforce, and then dispatched work directly to field workers.
- Field worker utilized Workforce to view work, and record work and events associated with their at that site.
- Used Operations Dashboards and view live or historic data.

I need a solution for internal use to manage simple water and sewer projects. This solution would preferably streamline workflows and replace paper form / double entry.

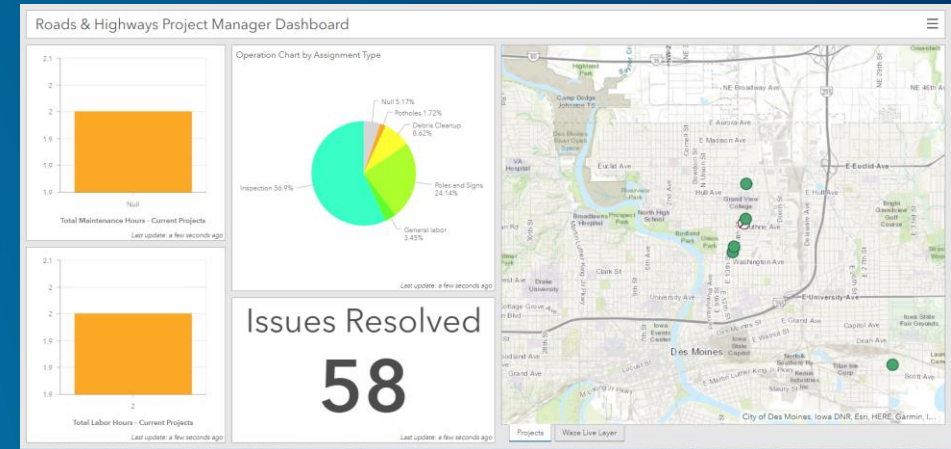
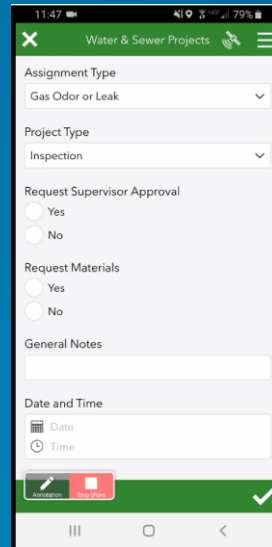
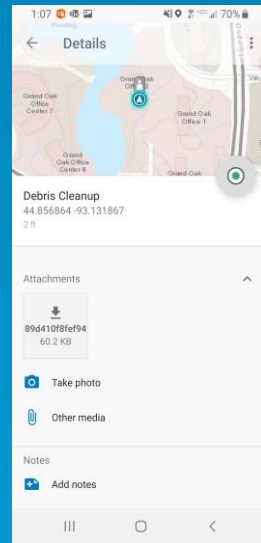
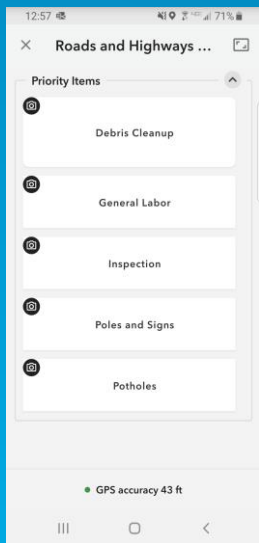
More specifically, our work follows a general order and we would like a solution to account for every stage. The solution would also act as a system of record for historic data, to assist with Customer Service calls, etc.

Supporting Mobile Workflows

Scenario #2:

I want to document “_____” roadway problems and use that to create work orders. Essentially, I want my entire team to be able to document any one of our major issues, anytime, anywhere. Then the work will be automatically dispatched to the appropriate person, whereby they will be notified immediately and even receive a picture of the problem/issue.

Supporting Mobile Workflows Scenario #2 Continued



Record issue with photo, that creates assignment in Workforce

Mobile workers sees new assignment in queue

Mobile workers access integrated apps to record work associated with assignment. Provides system of record.

- View results in real-time
- Public vs. Private capabilities
- Performance Management

Let's do it, pt.2!

Recap:

- We used ArcGIS QuickCapture to document our roadways problems.
- Linked QuickCapture to Workforce to create Work Order Assignments automatically with each problem recorded.
- Field Worker uses Workforce to receive work, integrated Survey123 app to record completed work.
- View results in Operations Dashboard.

I want to document roadway problems and use that to create work orders. Essentially, I want my entire team to be able to document any one of our major issues, anytime, anywhere. Then the work will be automatically dispatched to the appropriate person, whereby they will be notified immediately and even receive a picture of the problem/issue.

Public Works: What can ArcGIS do for you?

ArcGIS helps public works organizations:

- Maintain an authoritative inventory of public assets
- Analyze the effective life of aging infrastructure and visualize proposed improvements
- Coordinate capital project investments and maximize public expenditure
- Reduce the cost of field operations and maintenance activities
- Improve operational awareness and response to a storm, natural disaster, special event, or an incident
- Increase transparency and accountability
- Improve customer service



Thank you!!!





esri

THE
SCIENCE
OF
WHERE